

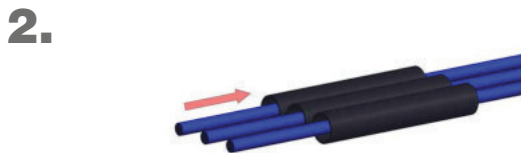
Assembly Instructions Series VP ClipLock - plug



Part as supplied
Shrinking tube (1), male contact (2),
connector shell (3)



Slide contact (2) completely into connector shell (3) until contact snaps
☞ Pull gently to check that contact is correctly located and remains in position



Place shrinking tube (1) on cable



Slide shrinking tube (1) on connector shell (3)



Remove dielectric insulation (L1 = 5-8 mm)



Shrink tube - shrinking temperature 110°C



Solder or crimp contact (2) on conductor
⚠ Please notice for soldering: Tin-solder must not remain on contact surface



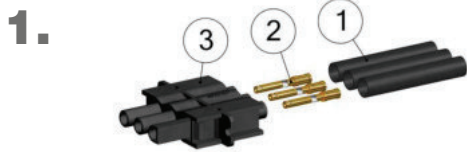
Assembly finished



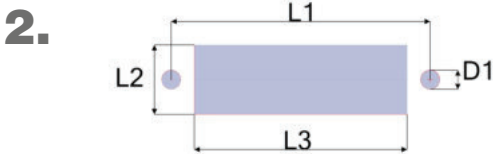
Note – important!

1. Please carefully read assembly instructions before cable assembly.

2. Cable assembly must only be done by trained and qualified personnel.



Part as supplied
Shrinking tube (1), female contact (2), connector shell (3)



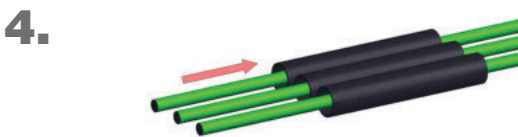
Panel cut out – feedthrough mounting

Type	D1 mm [inch]	L1 mm [inch]	L2 mm [inch]	L3 mm [inch]
VP-CL-1HV-BU	2.10 [.083"]	18.70 [.736"]	11.20 [.441"]	15.80 [.622"]
VP-CL-2HV-BU	3.10 [.122"]	33.00 [1.299"]	11.20 [.441"]	25.50 [1.004"]
VP-CL-3HV-BU	3.10 [.122"]	42.00 [1.654"]	11.20 [.441"]	34.50 [1.358"]

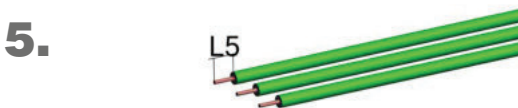


Panel cut out – surface mounting

Type	D2 mm [inch]	L4 mm [inch]
VP-CL-1HV-BU	2.80 [.110"]	8.50 [.335"]
VP-CL-2HV-BU	2.80 [.110"]	17.50 [.689"]
VP-CL-3HV-BU	2.80 [.110"]	26.50 [1.043"]



Place shrinking tube (1) on cable



Remove dielectric insulation
(L5 = 5-8 mm [.197" - .315"])



Solder or crimp contact (2) on conductor
⚠ Please notice for soldering: Tin-solder must not remain on contact surface



Slide contact (2) completely into connector shell (3) until contact snaps
🗨 Pull gently to check that contact is correctly located and remains in position



Slide shrinking tube (1) on connector shell (3)



Shrink tubes - shrinking temperature 110°C



Assembly finished



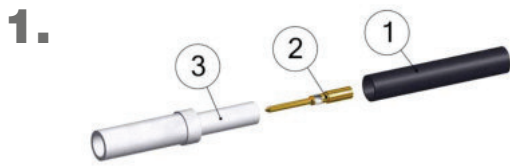
Note – important!

1. Please carefully read assembly instructions before cable assembly.

2. Cable assembly must only be done by trained and qualified personnel.

Assembly Instructions Series VP

Basic - plug



1.
Part as supplied
 Shrinking tube (1), male contact (2),
 connector shell (3)



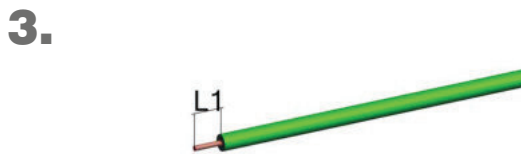
5.
Slide contact (2) completely into connector shell (3) until contact snaps
 Pull gently to check that contact is correctly located and remains in position



2.
 Place shrinking tube (1) on cable.



6.
 Slide shrinking tube (1) on connector shell (3)



3.
 Remove dielectric insulation (L1 = 5-8 mm
 [.197" - .315"])



7.
 Shrink tube - shrinking temperature 110°C



4.
Solder or crimp contact (2) on conductor
 Please notice for soldering: Tin-solder must not remain on contact surface



8.
 Assembly finished



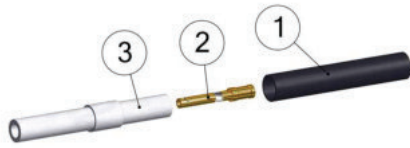
Note – important!

1. Please carefully read assembly instructions before cable assembly.

2. Cable assembly must only be done by trained and qualified personnel.

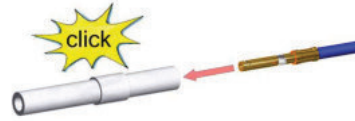
Assembly Instructions Series-VP Basic - receptacle

1.



Part as supplied
Shrinking tube (1), female contact (2),
connector shell (3)

5.



Slide contact (2) completely into connector shell (3) until contact snaps
☞ Pull gently to check that contact is correctly located and remains in position

2.



Place shrinking tube (1) on cable.

6.



Slide shrinking tube (1) on connector shell (3)

3.



Remove dielectric insulation (L1 = 5-8 mm)
[.197" - .315"]

7.



Shrink tube - shrinking temperature 110°C

4.



Solder or crimp contact (2) on conductor
⚠ Please notice for soldering: Tin-solder must not remain on contact surface

8.



Assembly finished



Note – important!

1. Please carefully read assembly instructions before cable assembly.

2. Cable assembly must only be done by trained and qualified personnel.